

President	Neil	50235559
Vice President	Meryl	50227676
Secretary	Peter	50221898
Treasurer	Karl	50227676
Quarter Master	Roger	50257325
Newsletter Editor	Tina	0448801656

# Sunraysia Bushwalkers 2019

Po Box 1827  
MILDURA 3502  
Ph: 03 50235559

Website  
[www.sunbushwalk.net.au](http://www.sunbushwalk.net.au)

## 2019



Affiliated with::  
  
Bushwalking Victoria  
towards better bushwalking

### Membership Fees

**\$40 per Person**

**Subs due 1<sup>st</sup> July**

### *In this issue:*

- ❖ Merbein Cliffs Walk \_ Barb
- ❖ Mt Jess Walk - Tina
- ❖ Federation Walks
- ❖ Leadership forum and AGM – Bushwalking Victoria
- ❖ Membership
- ❖ Annual Dinner
- ❖ Mallee Catchment Management Authority
- ❖ **Calendar**

### Subscriptions due in July

\$40 for the year.  
Direct bank transfer  
BSB 063 520  
Acc 00907072

Or bring to the meeting.





offered to  
fect and we  
ver.

The cliff face on our left was interesting in that it displayed varying colours from red compacted loam to stretches of yellow and grey clay. There was evidence of water and time erosion and this was constantly changing as we went by.



The river looked very clean and at one spot there was a large stretch of beautiful sand on the other side of the river. We walked past people fishing and a ski boat whizzed past. Further along we passed the new stair way which appears to be almost complete - since the recent damage. Around this area were plaques and monuments relating to the early settlers and history of events of this time.

It was a short walk on a sunny Sunday with very informative comments from Barb along the way. A great couple of hours, followed by a 'cuppa' - lovely and very enjoyable.

*Written by Elaine.*

*Note by Barb We started our walk from the Pioneer Plantation Lookout at the top of the cliffs. At the south end of the Lookout there is a gate and on passing through a path then leads one to above the pumping station and then down to the water's edge. Prior to the walk there had been some rain and the common itself was rather tacky under foot. Hence the walk along the river. The hoons had done there stuff and churned up the track. On my reconnoitre the day before one had managed to bog himself!*

*I did wonder whether this would be a nice spot for our Christmas break get together?*

Mt Jess – Sunset National Park  
11 and 12 May

Early Saturday morning; a 7 am start to be exact Tina, Patsy, Matt, Greg, Meryl, Karl, Peter, Roger, Tony, and our newest member Wendy headed off to the Sunset National (pink lakes) Park to walk Mount Jess. Our trusty leaders Karl and Meryl lead the way.



We walked up the sandy hill of Jess and through some beautiful Mallee scrub, Mallee farmland and more sand. The day was beautiful even though it was a bit overcast. Jess gave us some stunning views of neighboring pink lakes and local farmland. Lunch time was a stop at Lake Kenyon which gave us a pretty pink landscape and sanphire from the discolouration of the lake. We also walked up Mt Gnarr if only to be able to say we did it. The round trip was 17 kms. As we headed into camp in the afternoon we were greeted by Neil and Alison. Tony left us to head home after flying into Mildura the day before.

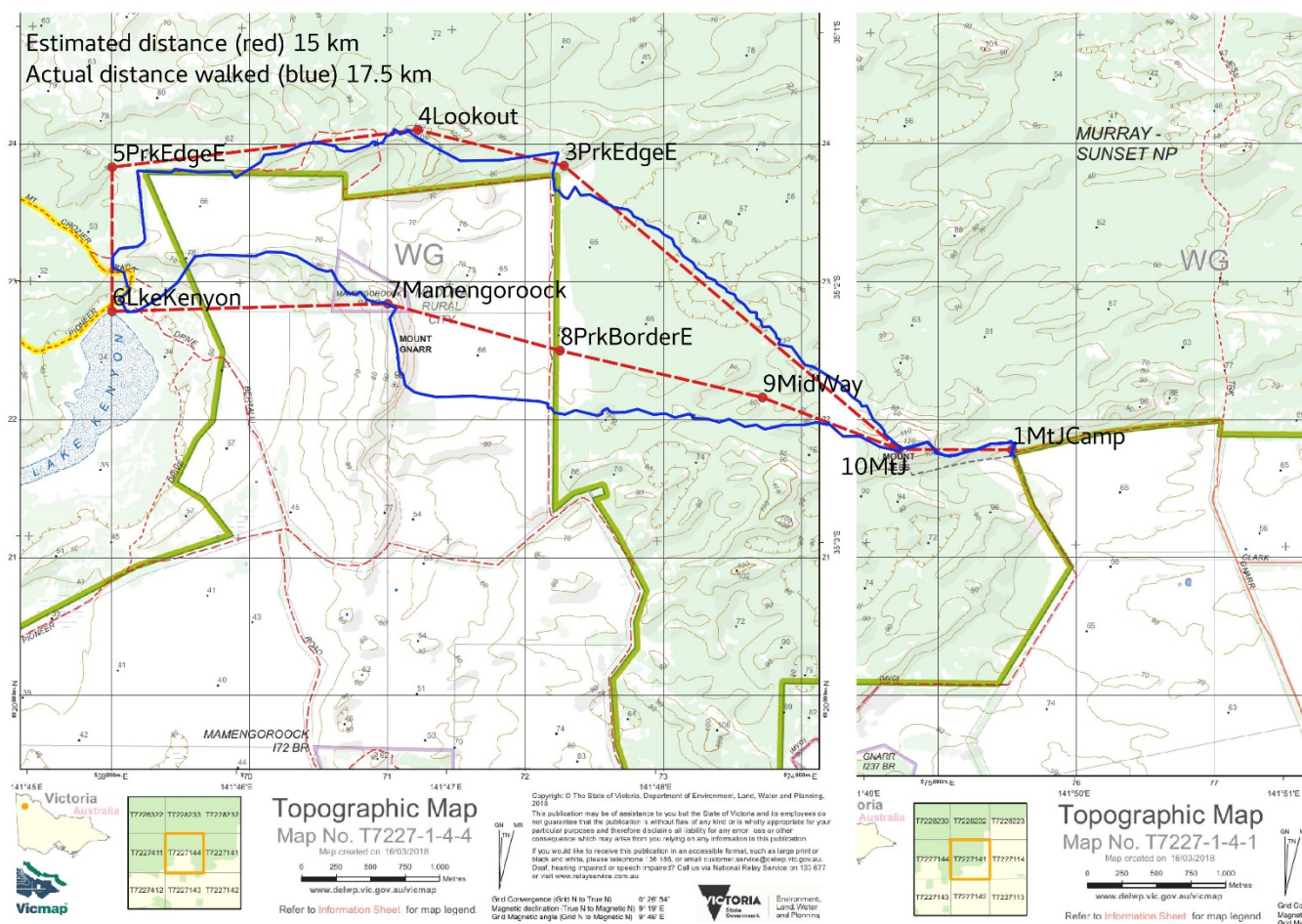
We set up our camp at the base of Mt Jess and Greg kept us warm with his fire. As the sun went down it was dinner time with all kinds of meals being cooked up. During the evening we endured light misty showers for a short time and managed to continue into the evening with new childrens somgs, accompanied by wine.

Sunday morning was an early pack up as we headed around to Lake Crosbie where we explored the old salt works. We walked part way round the lake before heading back to the cars and homeward bound.

It was a well planned walk by Karl and Meryl and we thank them for their time and effort .

Report written by Tina with Patsy. Thanks to Greg, Tony and Roger for photos as shared on Facebook.

A map of our planned walk in red. The blue line indicating our actual route.



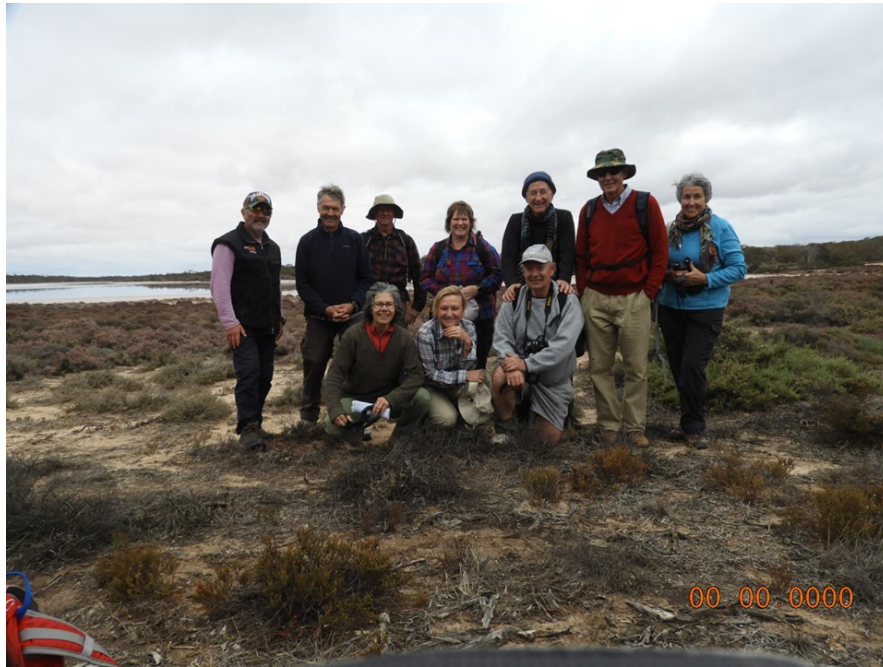




Above - the tessellating patterns on Lake Crosbie  
 Top right - our leaders    Bottom right - the camp  
 Below - farmland from the top of Mt Jess







### News from Bushwalking Victoria



## Leadership Forum

The Leadership Forum will be held prior to the Annual General Meeting, starting at 09:00 on Saturday, 15 June. [PLEASE CLICK HERE TO R.S.V.P. FOR BOTH THE LEADERSHIP FORUM AND AGM BY 5 JUNE](#)

We have changed the format of the forum this year in order to offer our members as much value as possible for the time they invest in attending. **The program is available here.** We want to encourage clubs to send 3 representatives to the forum for the club to be able to attend all the workshops and parallel sessions on offer and take as much practical and helpful information back to the club as possible. For club secretaries, the practical workshop on Privacy Legislation (protecting member privacy, storing and managing club member details, collecting member medical information, etc.) will be very useful as well as the Child Safety Legislation Q&A Session.

The venue is the **Beau Monde International Hotel in Doncaster East**. The hotel is easy to find and very close to either the Blackburn Road or Middleborough Road exit off the Eastern Free Way. There is plenty of free parking available in the basement of the hotel. We provide morning tea, a light lunch, and afternoon tea. There is a cafe in the hotel as well. The hotel is offering the attendees of the Leadership Forum a special room rate, i.e.

Executive Queen Room - \$120.00 per night

Deluxe King Room - \$140.00 per night

Please contact James on [james@beaumonde.com.au](mailto:james@beaumonde.com.au) to make a reservation.

Here are the area's top 5 walking trails near the hotel if you are looking for some green time on either Friday or Sunday.

### Annual General Meeting

Notice is hereby given that the Annual General Meeting of

Bushwalking Victoria Inc, A0002548Y, ABN 88 344 633 037

will be held on 15 June 2019 at 15:00 at the Beau Monde International Hotel, 934 Doncaster Road, Doncaster East, VIC 3109

### Annual Dinner discussion

Remember if you have any ideas we will be firming a venue at the meeting. Get in contact with the committee if you know of anywhere suitable. We are also preparing a lyrics book for the singalong. If you have any favourite songs you would like to sing along to, shoot me the name of it and we can include it in the lyric book.



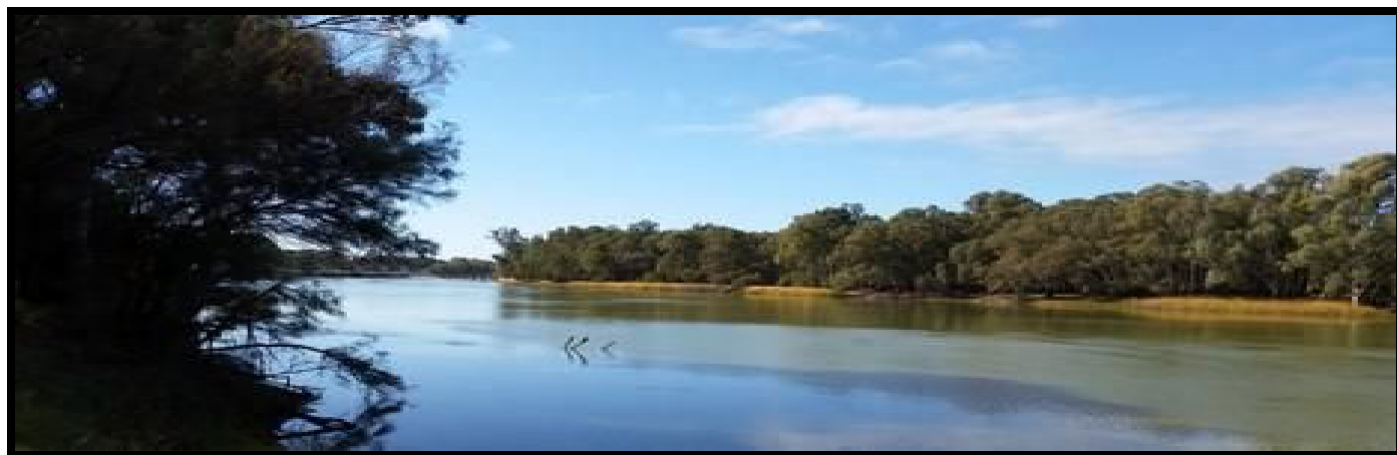
We have another 3 spots available if you are interested in being involved in this activity.

Ring the number attached and let them know the booking is under sunraysia bushwalkers. I will try to get more details to share at the meeting.

Sneek peek at the Heysen Trail walk happening this week. Day 1 were spectacular ocean views most of the way. Michael, Russell, Matt, Bec, Maureen and Tina are enjoying the winter weather in the Fleurieu Peninsula for 5 days.







## CALENDAR

2019

Month	Activity & Date	Activity	Coordinators	Comments
June	Wed 5	<b>Club meeting Apex Park Clubrooms 7.30 pm start</b>		
	Sunday 16	Raak Plain and Ochre Pits OR Nangiloc/Colignan river walk.	Peter Rhodes and	We will choose the better option depending on weather conditions.
	Dates TBA	Heysen Trail - Victor Harbour to Mt. Magnificent	Michael Jobe	Contact Michael for details.
July	Wed 3	<b>Club meeting Apex Park Clubrooms 7.30 pm start</b>		
	Saturday 13 and Sunday 14	Mid-year dinner	TBA	Coordinator, venue and meal details TBA.
August	Wed 7	<b>Club meeting Apex Park Clubrooms 7.30 pm start</b>		
	Saturday 3 and Sunday 4, or Sunday 4 Early August	Grampians Camp (perhaps Mt Stapleton, Briggs Bluff or Boroka Lookout) <b>OR</b> King's Billabong walk.  Scotland: West Highland Way (Glasgow to Fort William)	Meryl Hale TBA Michael Jobe	Camp details and transport options TBA  Meet in main car park adjacent to embankment at 9.00 am. Contact Michael for details
September	Wed 4	<b>Club meeting Apex Park Clubrooms 7.30 pm start</b>		
	Saturday 14 or Sunday 15	Yarrara Flora Reserve (Millewa)	TBA	Wildflower walk and perhaps lunch at the Werrimull Hotel.
October	Wed 2	<b>Club meeting Apex Park</b>		

	Saturday 12 and Sunday 13 Sunday 14  Dates TBA	<b>Clubrooms 7.30 pm start</b> Mopoke Hut to Mt Crozier hike OR  Apex Park/ back of Native Nursery walk.  Munda Biddi Bike Ride - WA	Meryl and Karl  TBA  Michael Jobe	Overnight camp and trek.  Local walk, meet Apex Park Clubrooms.  Contact Michael for details
<b>November</b>	<b>Wed 6</b> Sunday 10  Dates TBA	<b>Club meeting Apex Park</b> <b>Clubrooms 7.30 pm start</b> Paddle and/or walk Hattah Lakes.   Bike Ride Tasmania - Devonport then Stanley/Deloraine	Matt Jones and Peter Rhodes  Michael Jobe	Meet at Centro at 8.00 am prior to driving to Hattah. Bring lunch or snacks as appropriate. Canoe sharing can be arranged. Contact Michael for details

***Note:*** All activities and dates are subject to change. Always contact the Leader to register your attendance.

### **IMPORTANT INFORMATION**

It is necessary for all participants to carry a whistle on all walks as per the BWV guidelines. The following are the whistle signals

**1 long blast acknowledging a distress signal**

**3 short blasts for distress**

**4 short blasts indicating an emergency and for walking party to regroup ASAP**